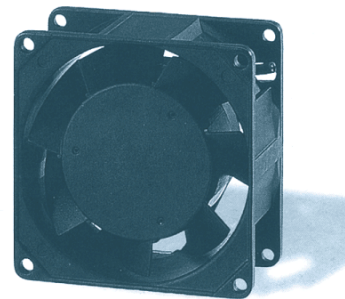


## 80x80x38 mm

### AC Fan

Frame : Aluminum painted & Plastic (UL94V-O)  
 Impeller: Plastic (UL94V-O P.B.T.)  
 Bearing: Ball Bearing & Sleeve Bearing  
 Safety Standards: UL/CUL, TUV



Model	Part No. Terminal Leadwire	Bearing System	Rated Voltage (V)	Freq (Hz)	Current (A)	Input Power (W)	Speed (rpm)	Air Flow (CFM)	Static Pressure (mm-H <sub>2</sub> O)	Noise Level (dB-A)	Weight (g)
UT8038HA1	8038HA1SAT(L)	Sleeve	110/120	50/60	0.11/0.15	10/16	2300/2800	32/35	0.17/0.11	35/31	293
	8038HA1BAT(L)	Ball									
UT8038HA2	8038HA2SAT(L)	Sleeve	220/240	50/60	0.06/0.08	10/17	2300/2800	32/35	0.17/0.11	35/31	293
	8038HA2BAT(L)	Ball									

