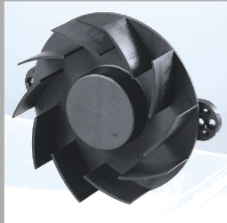


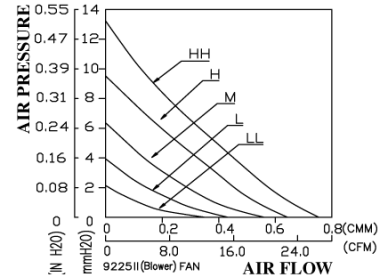
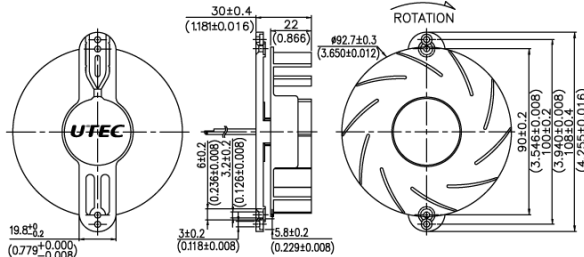
DC Blower Fan

ATB9225L Series

92x92x25mm II



Model	Rated Voltage (VDC)	Operating Voltage (VDC)	Rated Current (AMP)	Power Consumption (WATTS)	Speed Reference (RPM)	AirFlow (CMM)	(CFM)	Static Pressure (mm-H ₂ O)	(inch-H ₂ O)	Acoustic Noise (dBA)
ATB9225L-12LLS/FB	12	8~13.8	0.08	0.96	1200	0.345	12.17	2.13	0.084	21.8
ATB9225L-12LS/FB	12	6~13.8	0.12	1.44	1600	0.430	15.18	3.99	0.157	26.6
ATB9225L-12MS/FB	12	6~13.8	0.21	2.52	2000	0.566	19.97	6.13	0.241	33.4
ATB9225L-12HS/FB	12	6~13.8	0.36	4.32	2400	0.652	23.02	9.50	0.374	38.2
ATB9225L-12HHS/FB-	12	6~13.8	0.71	8.52	2800	0.754	26.61	13.26	0.522	41.9
ATB9225L-24LLS/FB	24	18~27.6	0.03	0.72	1200	0.345	12.17	2.13	0.084	21.8
ATB9225L-24LS/FB	24	12~27.6	0.06	1.44	1600	0.430	15.18	3.99	0.157	26.6
ATB9225L-24MS/FB	24	12~27.6	0.10	2.40	2000	0.566	19.97	6.13	0.241	33.4
ATB9225L-24HS/FB-	24	12~27.6	0.15	3.60	2400	0.652	23.02	9.50	0.374	38.2
ATB9225L-24HHS/FB-	24	12~27.6	0.23	5.52	2800	0.754	26.61	13.26	0.522	41.9



DC FAN

- Frame & Impeller: Plastic (UL94V-0)
- Bearing: Dual Ball Bearing
- Basic Locked Roter and Polarity Protected
- Safety Standards: UL/CUL, TUV