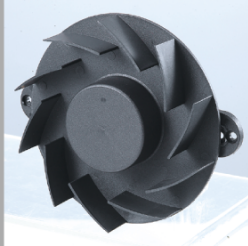


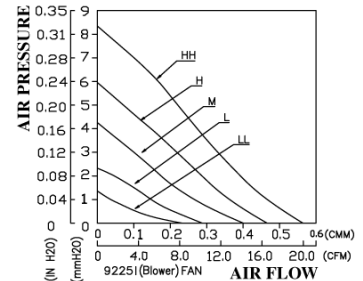
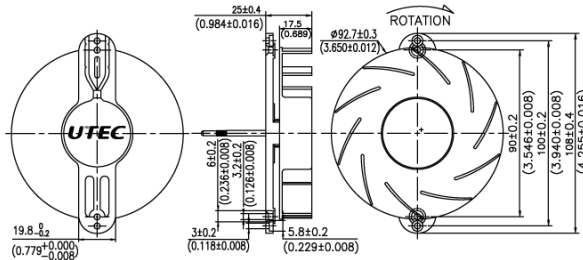
# DC Blower Fan

## ATB9225L Series

92x92x25mm I



Model	Rated Voltage (VDC)	Operating Voltage (VDC)	Rated Current (AMP)	Power Consumption (WATTS)	Speed Reference (RPM)	AirFlow (CMM)	(CFM)	Static Pressure (mm-H2O)	(inch-H2O)	Acoustic Noise (dBA)
ATB9225L-12LLS/FB	12	8~13.8	0.06	0.72	1200	0.228	8.06	1.37	0.054	20.1
ATB9225L-12LS/FB	12	6~13.8	0.08	0.96	1600	0.288	10.18	2.34	0.092	27.8
ATB9225L-12MS/FB	12	6~13.8	0.16	1.92	2000	0.405	14.29	4.19	0.165	33.3
ATB9225L-12HS/FB	12	6~13.8	0.28	3.36	2400	0.470	16.60	5.98	0.235	38.0
ATB9225L-12HHS/FB-	12	6~13.8	0.58	6.96	2800	0.564	19.93	8.33	0.328	42.1
ATB9225L-24LLS/FB	24	18~27.6	0.03	0.72	1200	0.228	8.06	1.37	0.054	20.1
ATB9225L-24LS/FB	24	12~27.6	0.06	1.44	1600	0.288	10.18	2.34	0.092	27.8
ATB9225L-24MS/FB	24	12~27.6	0.10	2.40	2000	0.405	14.29	4.19	0.165	33.3
ATB9225L-24HS/FB	24	12~27.6	0.15	3.60	2400	0.470	16.60	5.98	0.235	38.0
ATB9225L-24HHS/FB-	24	12~27.6	0.23	5.52	2800	0.564	19.93	8.33	0.328	42.1



## DC FAN

- Frame & Impeller: Plastic (UL94V-0)
- Bearing: Dual Ball Bearing
- Basic Locked Roter and Polarity Protected
- Safety Standards: UL/CUL, TUV