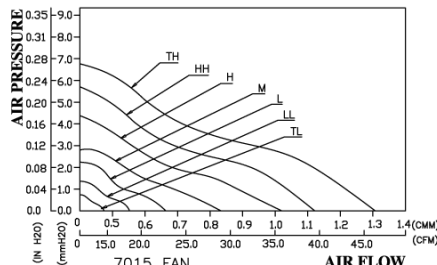
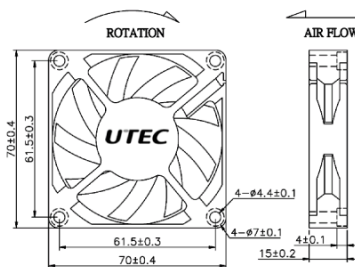
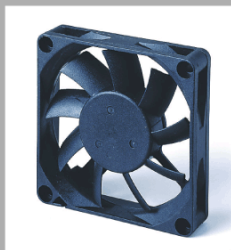


DC Axial Fan

AT7015L Series

70x70x15mm I



Model	Rated Voltage (VDC)	Operating Voltage (VDC)	Rated Current (AMP)	Power Consumption (WATTS)	Speed Reference (RPM)	AirFlow (CMM)	(CFM)	Static Pressure (mm-H2O)	(Inch-H2O)	Acoustic Noise (dBA)
AT7015L-07TLS/2B/1B/FB(-)	7	6~8	0.05	0.35	1400	0.348	12.29	0.65	0.026	19.1
AT7015L-07LLS/2B/1B/FB(-)	7	6~8	0.06	0.42	2000	0.544	19.21	1.20	0.047	22.0
AT7015L-12TLS/2B/1B/FB(-)	12	8~13.8	0.05	0.60	1400	0.348	12.29	0.65	0.026	19.1
AT7015L-12LLS/2B/1B/FB(-)	12	8~13.8	0.08	0.96	2000	0.544	19.21	1.20	0.047	22.0
AT7015L-12LS/2B/1B/FB	12	6~13.8	0.10	1.20	2600	0.686	24.22	2.10	0.083	27.5
AT7015L-12MS/2B/1B/FB	12	6~13.8	0.15	1.80	3200	0.828	29.23	2.87	0.113	32.4
AT7015L-12HS/2B/1B/FB	12	6~13.8	0.24	2.88	3800	1.018	35.94	4.27	0.168	37.2
AT7015L-12HHS/2B/1B/FB	12	6~13.8	0.29	3.48	4400	1.179	41.62	5.73	0.226	40.7
AT7015L-24LS/2B/1B/FB	24	12~27.6	0.08	1.92	2600	0.686	24.22	2.10	0.083	27.5
AT7015L-24MS/2B/1B/FB	24	12~27.6	0.09	2.16	3200	0.828	29.23	2.87	0.113	32.4
AT7015L-24HS/2B/1B/FB	24	12~27.6	0.13	3.12	3800	1.018	35.94	4.27	0.168	37.2

DC FAN

- Frame & Impeller: Plastic (UL94V-0)
- Bearing: Dual Ball Bearing
- Basic Locked Roter and Polarity Protected
- Safety Standards: UL/CUL, TUV