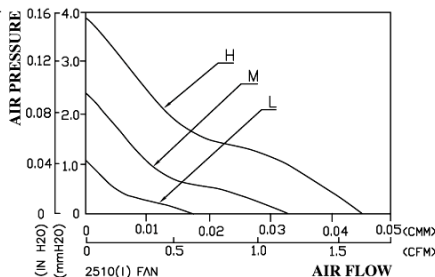
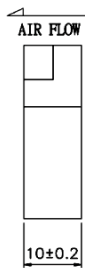
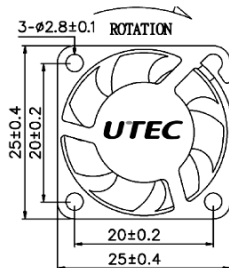
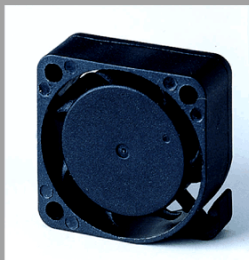


# DC Axial Fan

## AT2510L Series

25x25x10mm I



Model	Rated Voltage (VDC)	Operating Voltage (VDC)	Rated Current (AMP)	Power Consumption (WATTS)	Speed Reference (RPM)	AirFlow		Static Pressure		Acoustic Noise (dBA)
						(CMM)	(CFM)	(mm-H <sub>2</sub> O)	(Inch-H <sub>2</sub> O)	
AT2510L-03LS/2B/1B/FB	3.3	3~3.6	0.12	0.40	7000	0.024	0.83	0.89	0.035	19.4
AT2510L-03MS/2B/1B/FB	3.3	3~3.6	0.18	0.59	10000	0.042	1.47	1.86	0.073	22.1
AT2510L-03H2B/1B	3.3	3~3.6	0.22	0.73	13000	0.055	1.93	3.15	0.124	27.8
AT2510L-05LS/2B/1B/FB	5	4.5~5.5	0.11	0.55	7000	0.024	0.83	0.89	0.035	19.4
AT2510L-05MS/2B/1B/FB	5	4.5~5.5	0.17	0.85	10000	0.042	1.47	1.86	0.073	22.1
AT2510L-05H2B/1B	5	4.5~5.5	0.20	1.00	13000	0.055	1.93	3.15	0.124	27.8
AT2510L-12LS/2B/1B/FB	12	10.8~13.8	0.07	0.84	7000	0.024	0.83	0.89	0.035	19.4
AT2510L-12MS/2B/1B/FB	12	9~13.8	0.08	0.96	10000	0.042	1.47	1.86	0.073	22.1
AT2510L-12H2B/1B	12	9~13.8	0.10	1.20	13000	0.055	1.93	3.15	0.124	27.8

## DC FAN

- Frame & Impeller: Plastic (UL94V-0)
- Bearing: Dual Ball Bearing
- Basic Locked Roter and Polarity Protected
- Safety Standards: UL/CUL, TUV