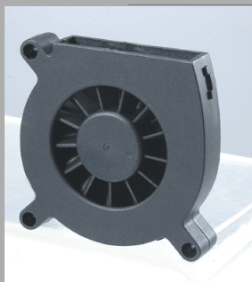


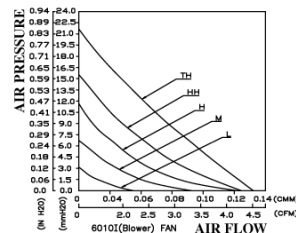
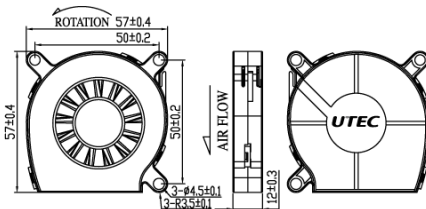
# DC Blower Fan

## ATB6010L Series

60x60x10mm I



Model	Rated Voltage (VDC)	Operating Voltage (VDC)	Rated Current (AMP)	Power Consumption (WATTS)	Speed Reference (RPM)	AirFlow		Static Pressure		Acoustic Noise (dBA)
						(CMM)	(CFM)	(mm-H2O)	(inch-H2O)	
ATB6010L-05L2B	5	4.5~5.5	0.06	0.30	2500	0.055	1.95	3.06	0.120	21.7
ATB6010L-05M2B	5	4~5.5	0.10	0.50	3500	0.077	2.73	6.75	0.266	27.2
ATB6010L-05H2B	5	4~5.5	0.24	1.20	4500	0.090	3.19	11.78	0.464	30.8
ATB6010L-12L2B	12	10.8~13.8	0.06	0.72	2500	0.055	1.95	3.06	0.120	21.7
ATB6010L-12M2B	12	9~13.8	0.07	0.84	3500	0.077	2.73	6.75	0.266	27.2
ATB6010L-12H2B	12	6~13.8	0.11	1.32	4500	0.090	3.19	11.78	0.464	30.8
ATB6010L-12HH2B	12	6~13.8	0.17	2.04	5500	0.110	3.89	15.40	0.606	36.6
ATB6010L-12TH2B	12	6~13.8	0.22	2.64	6500	0.131	4.64	21.93	0.864	44.2



DC Fan

## DC FAN

- Frame & Impeller: Plastic (UL94V-0)
- Bearing: Dual Ball Bearing
- Basic Locked Roter and Polarity Protected
- Safety Standards: UL/CUL, TUV