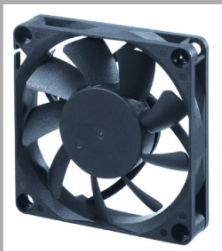


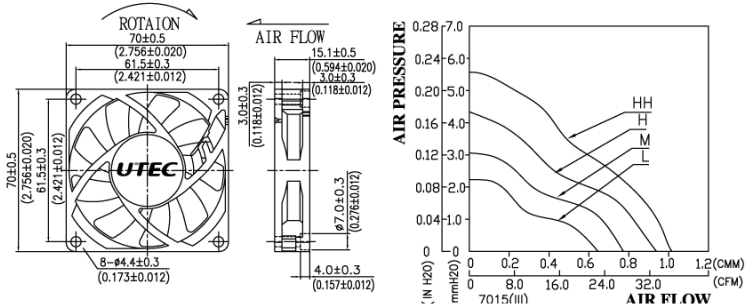
# DC Axial Fan

## AT7015L Series

70x70x15mm III



Model	Rated Voltage (VDC)	Operating Voltage (VDC)	Rated Current (AMP)	Power Consumption (WATTS)	Speed Reference (RPM)	AirFlow (CMM) (CFM)	Static Pressure (mm-H2O) (Inch-H2O)	Acoustic Noise (dBA)
AT7015L-12LS/2B/1B/FB	12	6~13.8	0.11	1.32	2600	0.638 22.52	2.12 0.084	25.8
AT7015L-12MS/2B/1B/FB	12	6~13.8	0.20	2.40	3200	0.761 26.89	3.03 0.119	31.7
AT7015L-12HS/2B/1B/FB	12	6~13.8	0.25	3.00	3800	0.930 32.85	4.37 0.172	35.9



DC Fan

## DC FAN

- Frame & Impeller: Plastic (UL94V-0)
- Bearing: Dual Ball Bearing
- Basic Locked Roter and Polarity Protected
- Safety Standards: UL/CUL, TUV